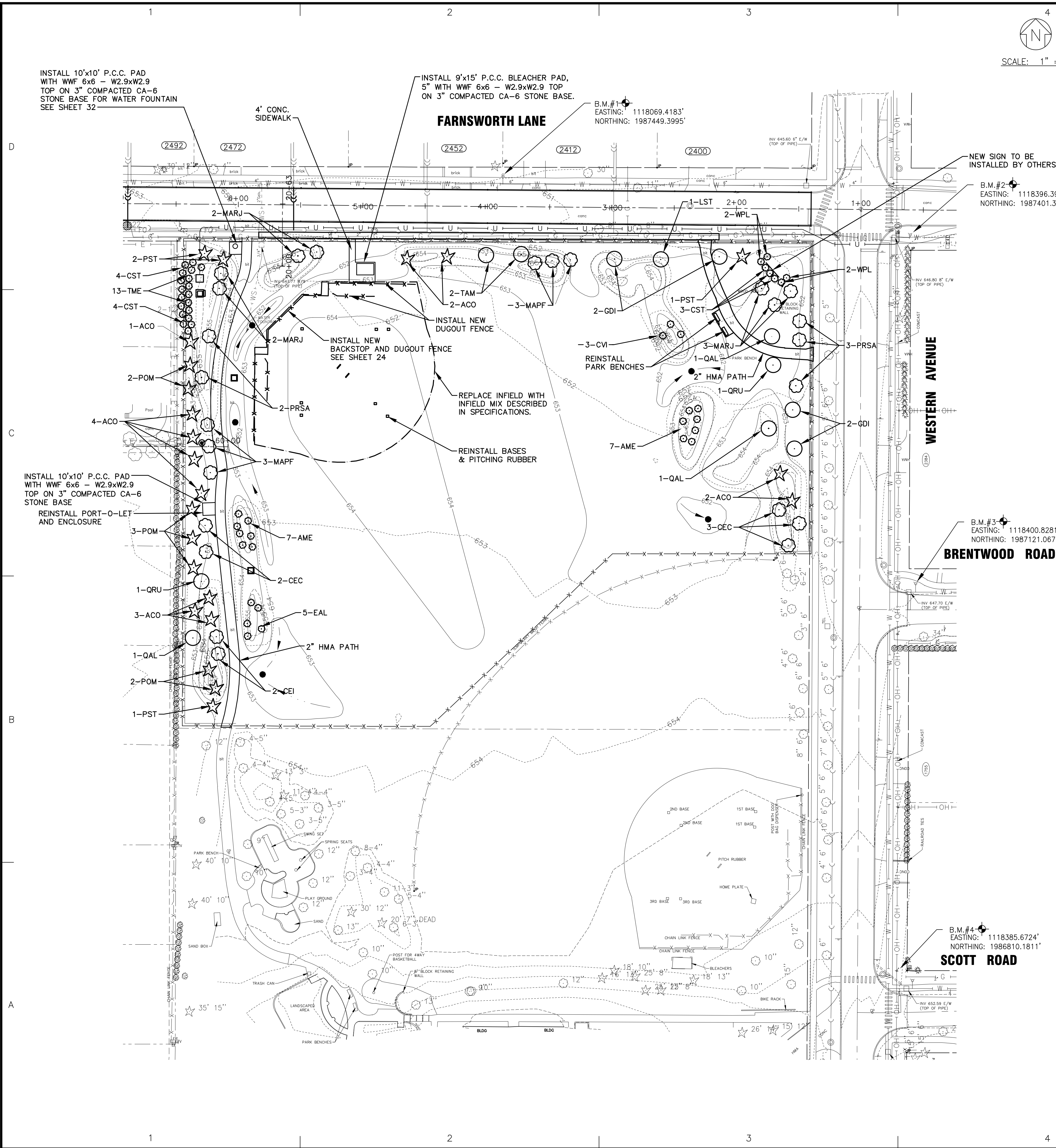
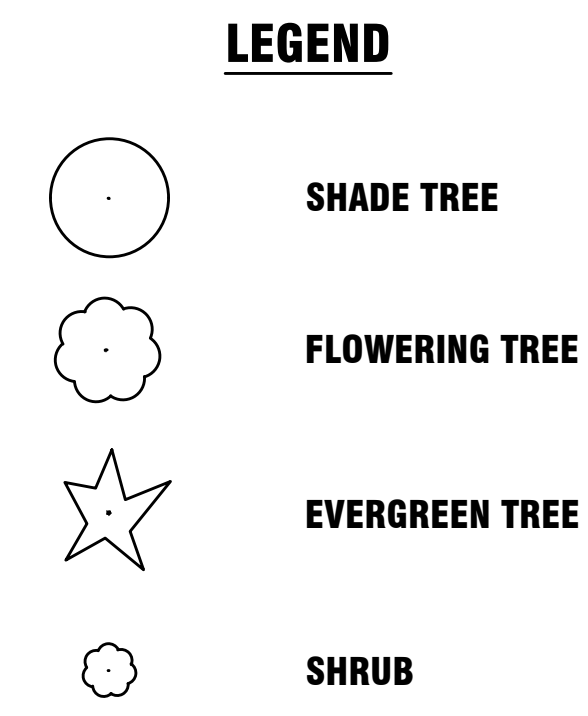


I:\CRYSTAL LAKE\NORBK\130249-WESCOTT PARK\CADD\DWGS\CURRENT\130249-TOPO-CSD-2012.DWG 11 LANDSCAPE PLAN
 Plotted: 11/17/2015 6:48 AM By: 07BMSB
 Copyright © 2015, By Baxter & Woodman, Inc.
 State of Illinois - Professional Design Firm
 License No. - 184-001121 - Expires 4-30-15



SCALE: 1" = 40'



- NOTES**
- REPLACE ALL EXISTING BENCHES AND TRASH CANS WHICH WERE SALVAGED AND STORED FOR REUSE.
 - RESTORE ALL DISTURBED AREAS W/ A MINIMUM OF 6" OF PULVERIZED TOPSOIL AND SOD EXCEPT AS NOTED.
 - REMOVE PARK BOUNDARY FENCE.
 - THE LOCATIONS OF TREES AND SHRUBS TO BE STAKED BY CONTRACTOR AND APPROVED BY VILLAGE AND PARK DISTRICT PRIOR TO PLANTING.

WESTCOTT PARK

CODE	QTY	SIZE	BOTANICAL NAME	COMMON NAME
PLANT LIST				
SHADE TREES				
AFR	1	3" CAL	ACER X FREEMANII V. RUBRUM	REDPOINTE MAPLE
GDI	7	3" CAL	GYMNOCLADUS DIOICUS	KENTUCKY COFFEE TREE
LST	1	3" CAL	LIQUIDAMBAR STYRACIFLUA	SWEETGUM
QAL	3	3" CAL	QUERCUS ALBA	WHITE OAK
QRU	2	3" CAL	QUERCUS RUBRA	NORTHERN RED OAK
TAM	5	3" CAL	TILIA AMERICANA	AMERICAN LINDEN (BASSWOOD)
UAC	1	3" CAL	ULMUS 'MORTON' (ACCOLADE)	ACCOLADE HYBRID ELM
EVERGREEN TREES				
ACO	12	8"	ABIES CONCOLOR	WHITE FIR
POM	7	8"	PICEA OMORIKA	SERBIAN SPRUCE
PST	4	8"	PINUS STROBUS	WHITE PINE
FLOWERING TREES				
CEC	5	2" CAL	CERCIS CANADENSIS	REDBUD
CCI	2	2" CAL	CRATAEGUS CRUSGALLI VAR. INERI	THORNLESS COCKSPUR HAWTHORN
MAPPF	6	2" CAL	MALLUS 'PRAIRIE FIRE'	PRAIRIE FIRE CRABAPPLE
MARJ	7	2" CAL	MALLUS 'RED JEWEL'	RED JEWEL CRABAPPLE
PRSA	5	2" CAL	PRUNUS SARGENTII	SARGENT CHERRY
SHRUBS				
AME	14	2' HEIGHT, B&B	ARONIA MELANOCARPA 'MORTON'	IROQUOIS BEAUTY BLACK CHOKECH
CVI	3	4' HEIGHT, B&B	CHIONANTHUS VIRGINICUS	WHITE FRINGETREE
CST	11	3' HEIGHT, B&B	CORNUS STOLONIFERA 'BAILEY'	BAILEY'S RED-OSIER DOGWOOD
EAL	5	3' HEIGHT, B&B	EUONYMUS ALATA	WINGED EUONYMUS
TME	13	2" WIDTH, CONT.	TAXUS X MEDIA DENSIFORMIS	DENSE YEW
WFL	4	3" GAL	WEIGELA FLORIDA 'MINUET'	MINUET WEIGELA

- LOCATIONS OF TREES ALONG FARNSWORTH LANE:**
- STA. 6+89, 18' LT. GDI (KENTUCKY COFFEE TREE)
 - STA. 7+53, 18' LT. TAM (AMERICAN LINDEN-BASSWOOD)
 - STA. 9+58, 18' LT. UAC (ACCOLADE HYBRID ELM)
 - STA. 9+91, 18' LT. TAM (AMERICAN LINDEN-BASSWOOD)
 - STA. 13+70, 18' LT. AFR (REDPOINTE MAPLE)
 - STA. 14+08, 18' LT. GDI (KENTUCKY COFFEE TREE)
 - STA. 14+48, 18' LT. GDI (KENTUCKY COFFEE TREE)
 - STA. 14+97, 18' LT. TAM (AMERICAN LINDEN-BASSWOOD)



CONSULTANTS

NO.	DATE	DESCRIPTION

REFER TO EQUIPMENT MANUFACTURER'S SHOP DRAWING

PLAN SHEET DESIGNATION

COVER
 G - GENERAL
 H - HAZARDOUS MATERIALS
 L - LANDSCAPE
 S - STRUCTURAL
 A - ARCHITECTURAL
 I - INSTRUMENTATION
 F - FIRE PROTECTION
 P - PLUMBING
 M - MECHANICAL
 E - ELECTRICAL
 T - TELECOMMUNICATIONS
 R - RESOURCE

PROJECT NO: 130249

SCALE: 1" = 40'
 DRAWING DATE: 11-17-15
 DESIGNED BY: MSB
 DRAWN BY: MGP
 CHECKED BY: PDS

CLIENT

VILLAGE OF NORTHBROOK, ILLINOIS

WESCOTT PARK STORMWATER STORAGE FACILITY

SHEET TITLE

WESCOTT PARK LANDSCAPE & RESTORATION PLAN